

QUADRO B12



MAIN VERSIONS

ALL IN 1 FIXTURE

KEY FEATURES

- RGBW LED bar designed for temporary installation and event
- No cable required
- Average 12 Hours autonomy
- Individual led pixel control
- High capacity and long life Lithium rechargeable battery
- Wireless transmitter and receiver on board
- Throw distance: 3-8 m

LIGHT SOURCE:

- Power engine: 12 X 10W RGBW LED
- Average led life: 50.000 Hours

SPECIFICATIONS:

Color

- RGBW color mixing

Pixel control

- Individual

Beam angle

- 30°

Strobe/Dimmer

- Strobe: variable
- Dimmer: Linear digital 0-100%

Battery

- Lithium rechargeable battery pack
- More than 12 hours of autonomy
- Less than 4 hours of charging time
- More than 500 charging cycles

Wireless

- Transmitter/Receiver on board

Cooling

- Forced ventilation
- Controlled fan speed

Mounting

- Adjustable mounting brackets

PHYSICAL SIZE:

- Attached drawings
- Weight: 8.5 kg
- Packing dimension: 75x55x10 cm
- Gross weight: 9.5 kg

CONTROL PROTOCOL AND PROGRAMMING:

- USITT Dmx 512/1990
- 3 Control channel modes: 7/48/51 channels
- 4 operational modes: DMX-512, Slave, Auto, Audio
- 4 buttons control panel
- LCD display, auto lock

AVAILABLE COLORS:

- Black
- Architectural gray
- Other on request

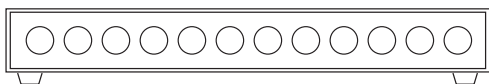
ELECTRICAL SPECIFICATION/ CONNECTIONS:

- AC power: 100-240V, 50/60HZ
- Max power consumption: 120 W
- Power connection: Powercon IN/OUT
- Dmx connection: 3 poles IN/OUT

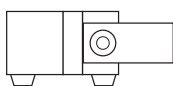
ACCESSORIES:

- Powercon-Schuko power cord
- Dmx cable
- Safety cord
- Wireless transmitter
- Flight case with charging system

- Accessories can be included in special offer



700



70

160